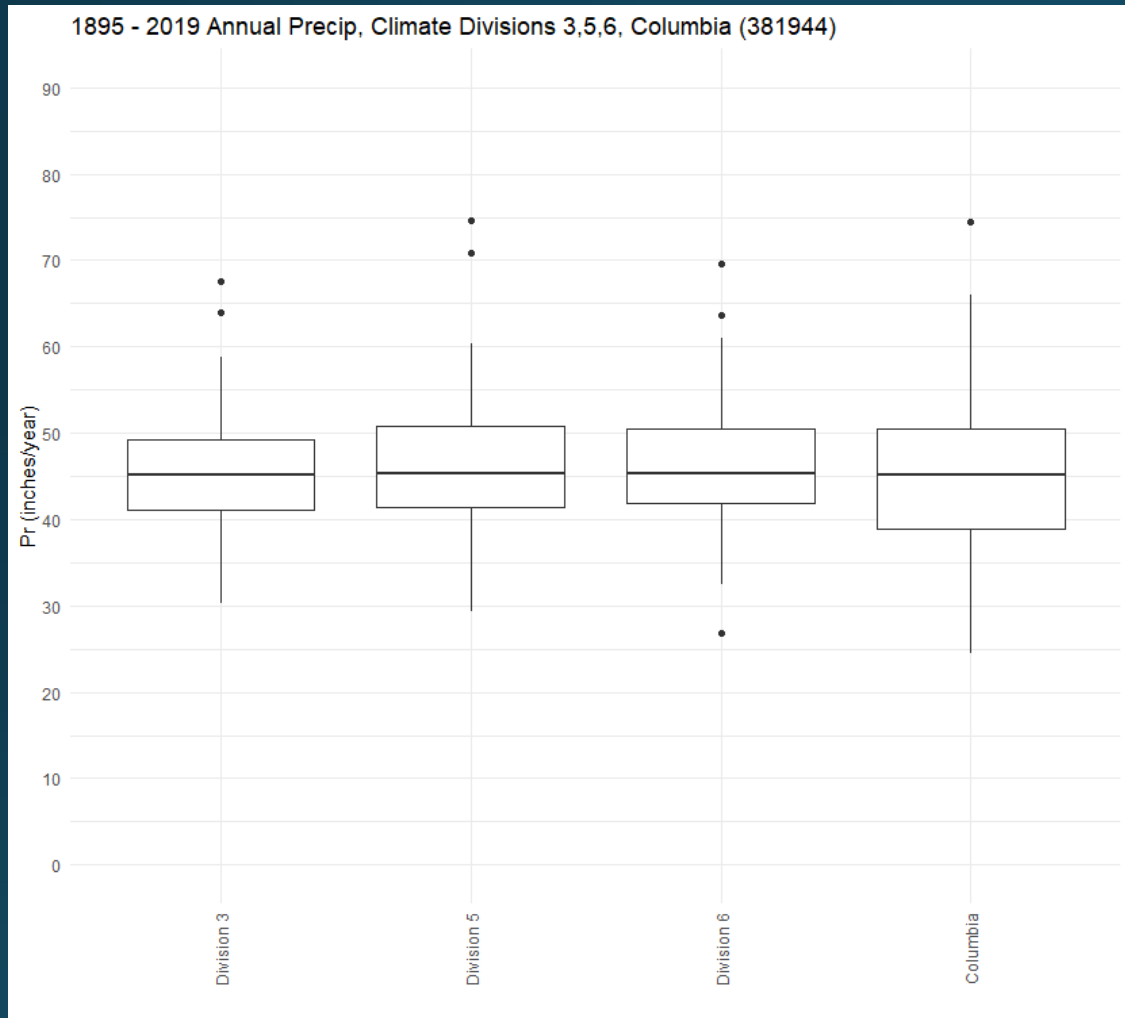


Jory Fleming

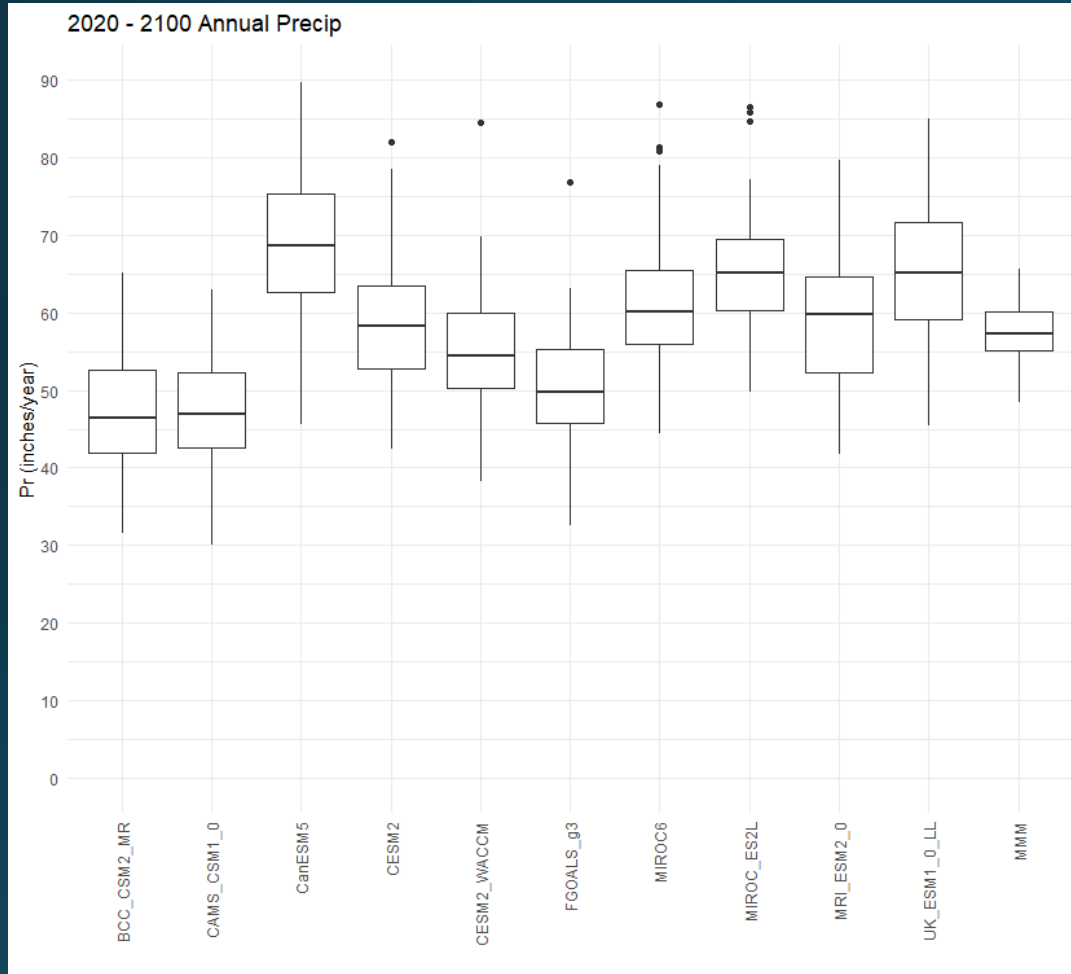
Climate Updates

NOAA Data – Historical Precip

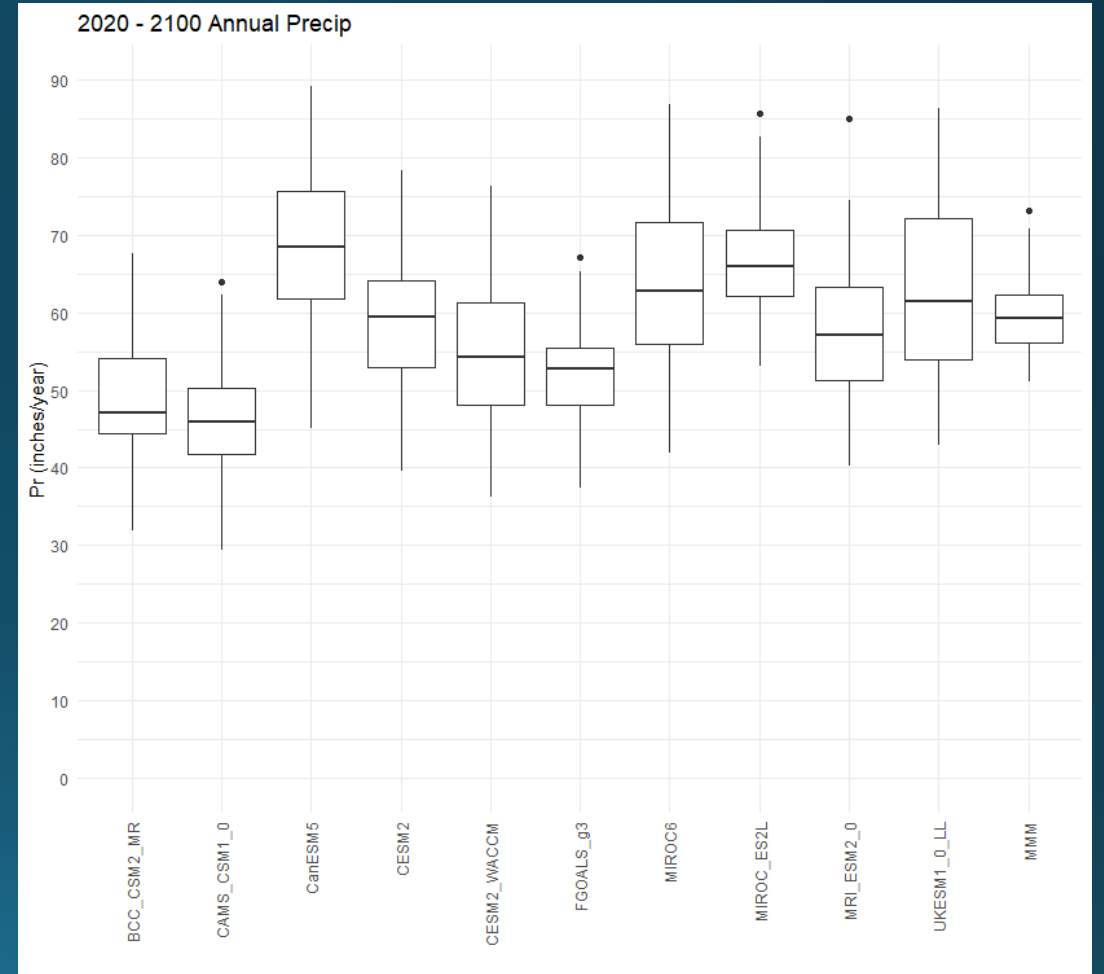


CMIP6 Models – Future Precip

Moderate Emissions

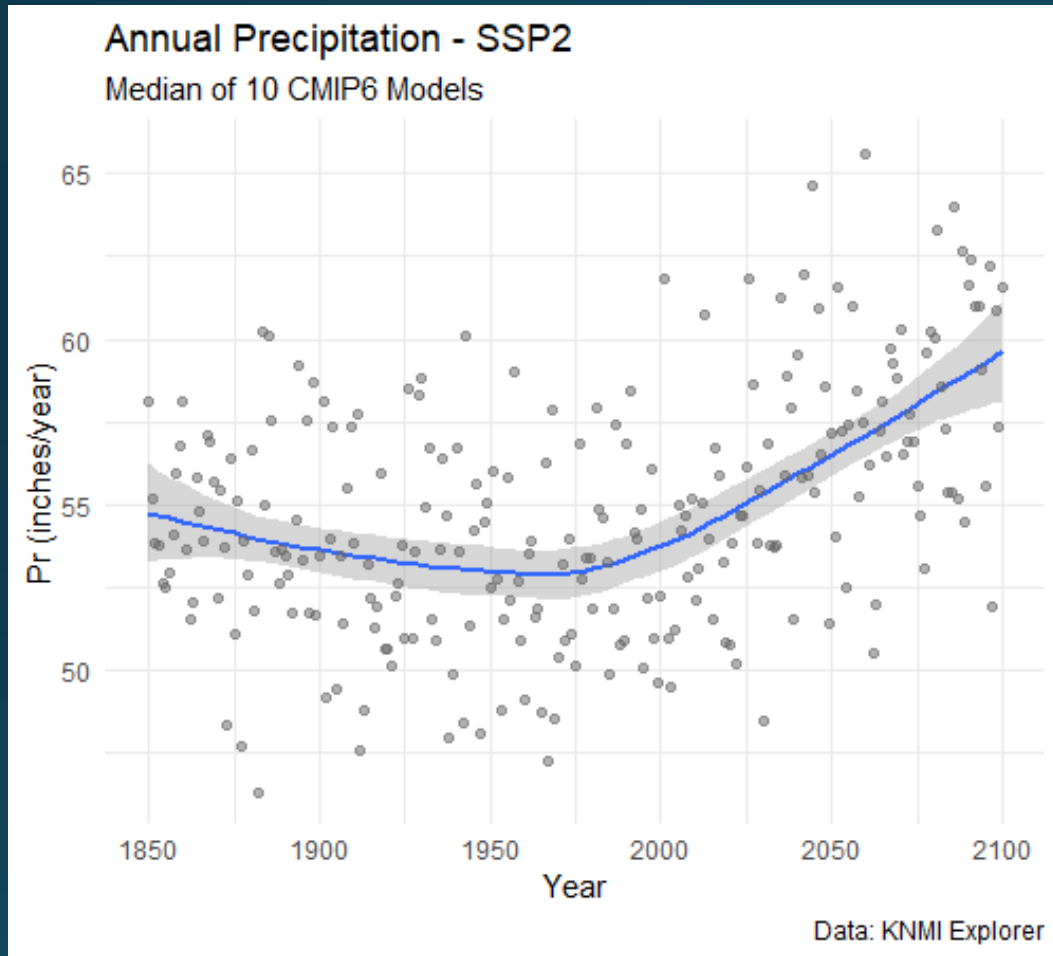


High Emissions

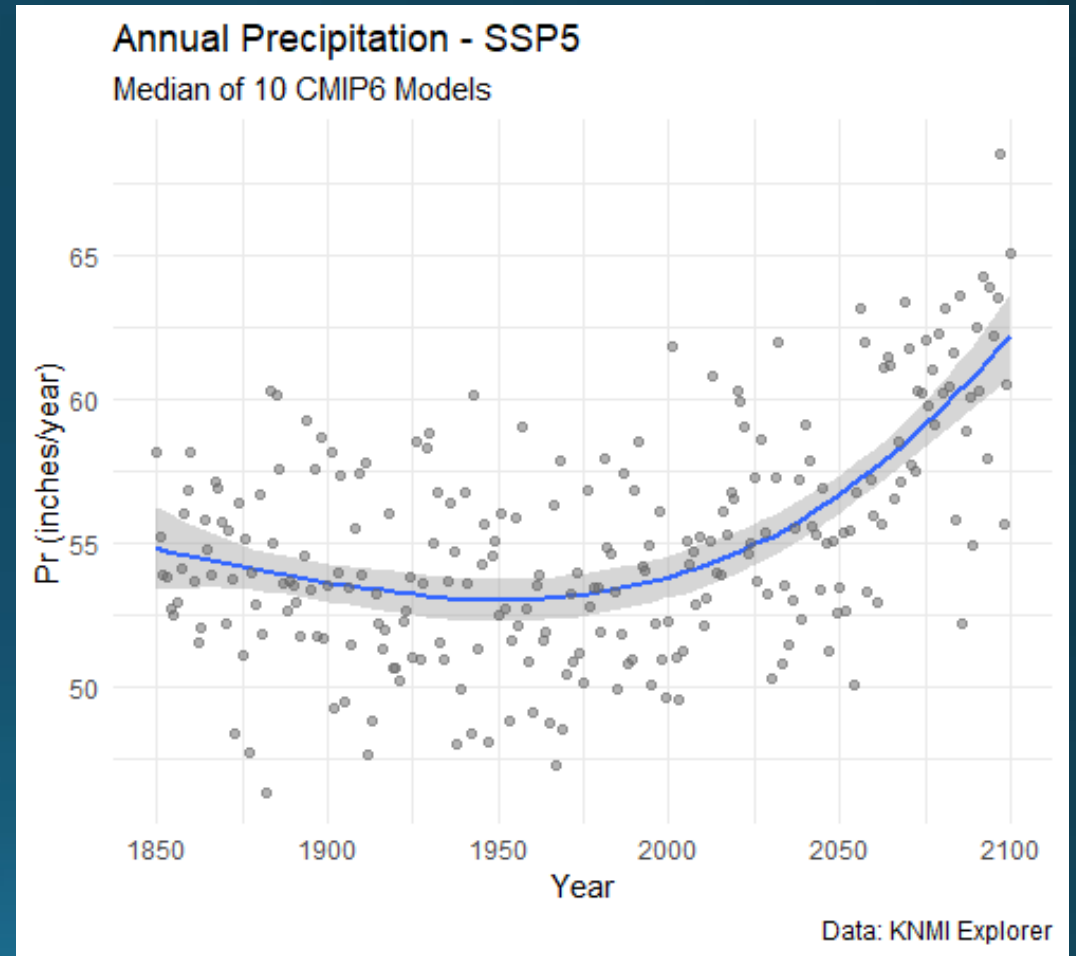


CMIP6 Models – Future Precip

Moderate Emissions



High Emissions



Other Data

NOAA

- Older generation of CMIP5 has been aggregated to useful units (e.g. county)
- Temperature
- Tmax / PrMax (e.g. days above 95 degrees, days with precip above 2")

USGS

- Future Land Cover predictions (LULC until 2100, 250 meter cells)
- Future streamflow rates / parameters (CMIP5, 2145 – 2075, various parameters)

COG Data Questions?

Adaptation Frameworks – co-benefits

Overarching management

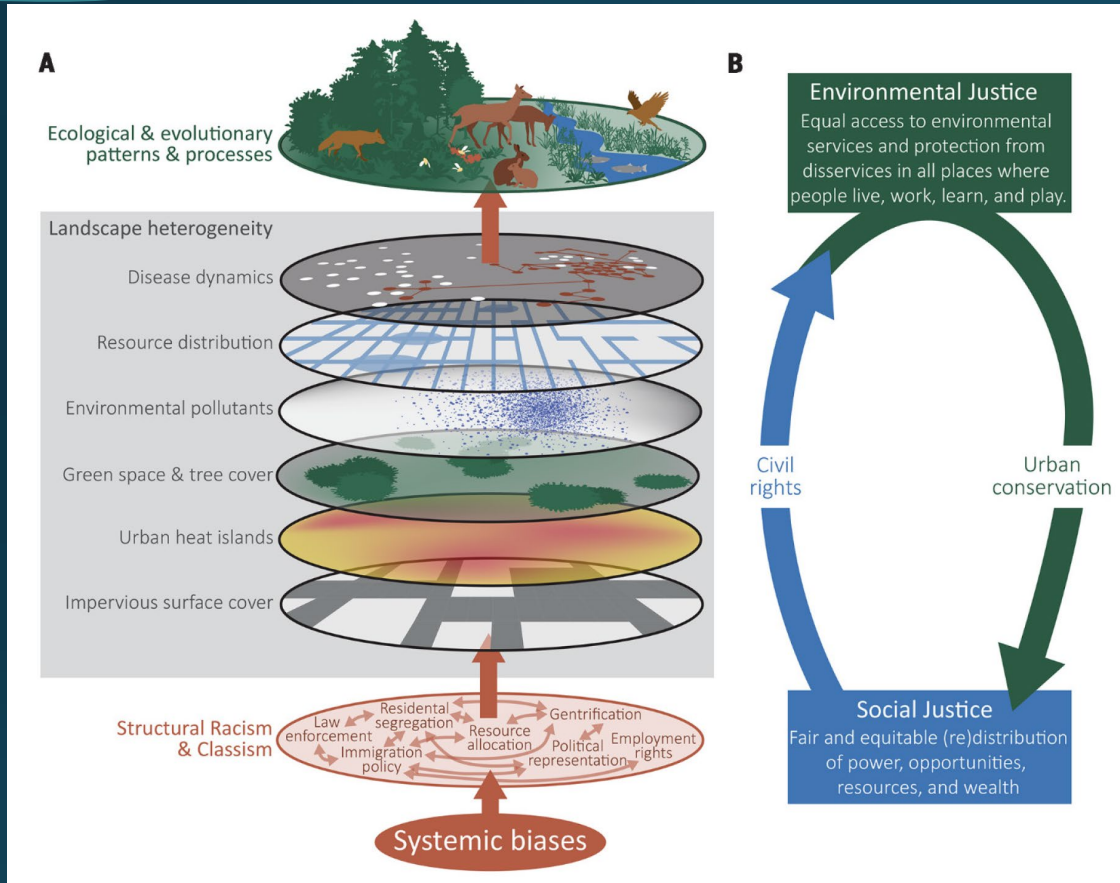


BMP specific



Diringer, Sarah, Heather Cooley, Morgan Shimabuku, Sonali Abraham, Madeline Gorchels, Cora Kammeyer, and Robert Wilkinson. 2020. *Incorporating Multiple Benefits into Water Projects: A Guide for Water Managers*. Oakland, Calif.: Pacific Institute.

Adaptation Frameworks – equitable adaptation



- 1) As a framework
- 2) As a data input (Census ACS Data to reference when considering implementing adaptation measures)
 - % non-white
 - Median Household Income
 - % Poverty

The ecological and evolutionary consequences of systemic racism in urban environments

By Christopher J. Schell, Karen Dyson, Tracy L. Fuentes, Simone Des Roches, Nyeema C. Harris, Danica Sterud Miller, Cleo A. Woelfle-Erskine, Max R. Lambert

Science - 18 Sep 2020

Other Climate Elements

- Data work (or in other WTM sections)
- General overview
 - Climate literature for the Southeast (expectations for temperature & precipitation)
 - Relevant watershed examples from literature (e.g. bacteria)

What questions is the COG especially interested in?

Document Integration

- BMP Matrix (e.g. green infrastructure)
- Funding (carbon credits)
- Demographics (environmental justice / equitable adaptation)
- Stakeholder meetings (e.g. climate concerns)
- Education / outreach (e.g. a future-oriented outlook, climate services)

What questions is the COG especially interested in?

COG Intern

Katie mentioned a COG intern may be interested in collaborating on climate and the planning document. Jory happy to help / provide work in an area of mutual interest.

- Equitable adaptation / GIS maps of Census layers
- Writing – assisting with intern leading a sub-section (lit. review and writing) important to the COG (e.g. climate / bacteria)
- Other ideas?